

*Customised
interior organisers
for your Nolte or
nolteneo kitchen*



**Everything
organised
*in your kitchen.***



nolte[®]
KÜCHEN



CONTENTS

PLANNING YOUR KITCHEN

Everything in its place –
Maximum storage space perfectly organised 4

Everything in easy reach –
For easy uninterrupted work flows 6

Everything where you need it –
For tidy item storage 8

**INTRODUCTION TO OUR
PRODUCT RANGE**

The right options for every style and budget 10

Everything in a set – All-inclusive sets for your pull-out unit
or sets for drawers and pull-outs 12

Everything tailored – Individual components
put together to suit your needs 14

OUR COMMITMENT

Sustainability as a guiding principle at Nolte Küchen 39



QUARTZ GREY PLASTIC

Full organisers 16



BLACK PLASTIC

Full organisers 18



SOLID BEECH WOOD

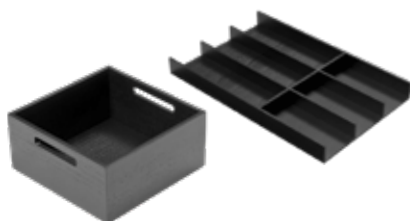
Full organisers 19



SOLID OAK WOOD

Full organisers 20

Segmented organisers 22



SOLID ASH WOOD, BLACK

Segmented organisers 24



nolte neo EQUIPMENT

Black plastic 30

Solid ash wood, black..... 32

T.I.O. in marble look 36

Everything in its place

MAXIMUM STORAGE SPACE PERFECTLY ORGANISED.

Whether you've already selected your Nolte kitchen or are still planning it: Besides an appealing look, high-quality features, generous storage space and carefully considered details, the interior too is so incredibly important. Nolte Küchen has a wide range of products for you, to perfectly structure your drawers and pull-outs. With our products, there's a place for everything, walking distances in the kitchen are short and work flows are smooth.

We suggest planning how exactly you would like to use your kitchen ahead of time so that each functional area can be set up in the most helpful way. For instance, store fresh food near the sink and the waste bin so that you can dispose of any food waste quickly and efficiently. Likewise, it is best to keep cooking utensils near the hob so that they are within easy reach.

LESS CHAOS? THAT
CAN BE ORGANISED!



*“Organisation is when
you always know
where you don’t even
have to look.”*

Netty Neuthal







SAVE TIME WITH SMART KITCHEN ORGANISATION

Store your vegetables near the sink and waste separation system. This lets you wash your vegetables right when you get them out and immediately dispose of any food waste without having to walk any extra distances.



Everything in easy reach

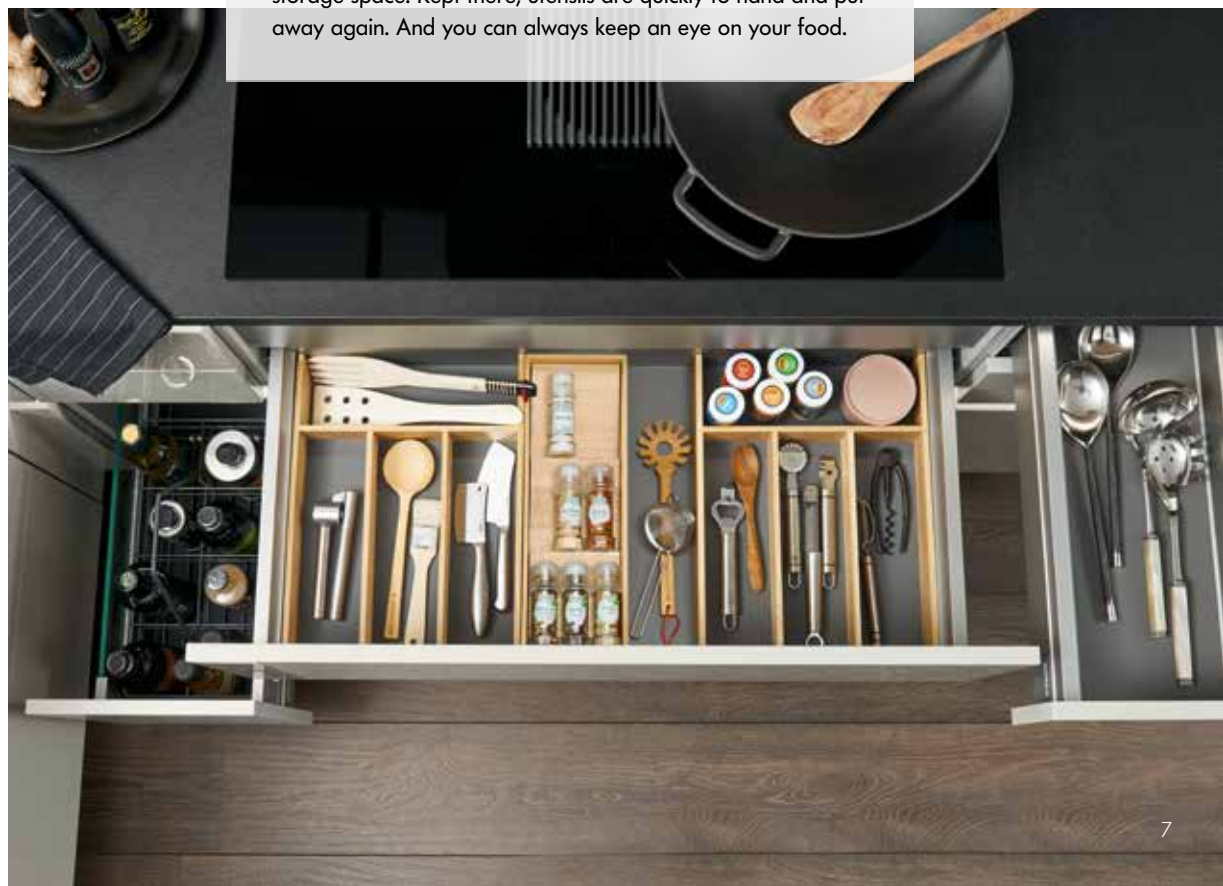
FOR EASY UNINTERRUPTED WORK FLOWS.

When cooking, you don't want your food preparation to come to a halt because you suddenly need to look for something important. Ingredients and cooking utensils should always be at hand without having to think where to find them. Clever interior organisers from Nolte Küchen provide fast access and make cooking more pleasurable.



SPICES AND OILS READY TO HAND

Salt, pepper, vinegar, oil, – there are some ingredients that always have to be ready to hand when cooking. Pull-outs and drawers to the right, left and underneath the cooker are the ideal storage space. Kept there, utensils are quickly to hand and put away again. And you can always keep an eye on your food.





Everything where **you need it**

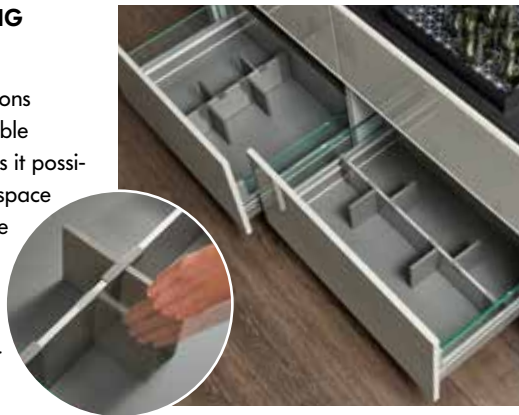
FOR TIDY ITEM STORAGE.

Convenient pull-outs are a particularly great space for your supplies and kitchen utensils: Just a glance from above and you know where everything is and can grab whatever you need.

Well-structured partitioning provides a place for everything. Cross and depth partitions, convenient boxes, all-purpose trays and function bases make sure that both large pots and small glasses are stored neatly and are within reach at all times. These intelligent solutions help you tidy your kitchen in next to no time and make it easy to store away or take out your kitchen utensils.

VARIABLE PARTITIONING OF YOUR PULL-OUTS

The cross and depth partitions made of plastic using variable partitioning elements makes it possible to adapt your storage space precisely to your needs. The partitioning elements can be arranged in a line or offset to adapt perfectly to the space required by your supplies.



A depth partition divides your pull-out into up to five separate areas so that you can store a variety of food items and kitchen utensils in a neat and tidy way.



Practical boxes and all-purpose trays keep the pull-out neatly arranged so that e.g. foods such as onions, garlic and potatoes are always ready at hand in a neat storage space.



FUNCTION BASES WITH SLOT-IN CROSS DIVIDERS

Function bases with individually adjustable slot-in cross dividers keep your dishes neatly organised. Pots and pans can easily be stored next to or on top of each other, while the matching lids are kept neatly arranged and ready to hand.



The right options **for every style and budget**



Quartz grey PLASTIC



Basic equipment: Cutlery inserts are available for each drawer width with a wide range of accessories and convenient cross and depth partitions for the pull-outs. Products on page 16



Black PLASTIC



Upgrade: These easy-to-clean interior organising elements offer a modern, stylish solution for your drawers and pull-outs. Combine an elegant look with great function. Products on page 18



Solid BEECH wood



Affordable wood: Inserts in solid beech wood offer a simple solution for keeping your kitchen drawers tidy and give your kitchen a warm and cosy look. These products are the ideal entry into wood design for price-conscious customers. Products on page 19

DESIGN FOR EVERY TASTE.

The choice is yours: Nolte Küchen offers you all sorts of different solutions, from basic accessories to options in classy solid wood. Define the interior organisation of your drawers and pull-outs in exactly the way you want. You can look forward to versatile interior organisers.



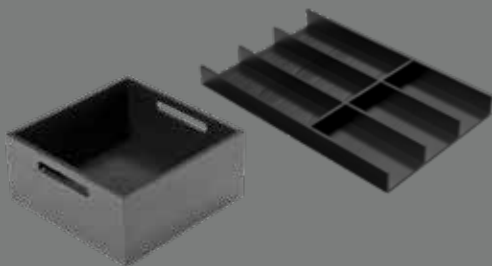
Solid OAK wood



Captivates with a look of natural authenticity: You can look forward to cutlery inserts for every drawer width as well as a wide range of pull-out accessories and equipment. The various elements can be combined in any way you choose. Products from page 20



Solid ASH wood, black



Particularly high in quality: You can choose from cutlery inserts for every drawer width, numerous pull-out accessories and a wide selection of customisable elements. Products from page 24



Options NOLTENEO



For design lovers: A versatile range of interior options is available for your nolteneo kitchen in a variety of materials and designs. Some of the accessories from the Nolte Küchen range can also be selected. Products from page 28

Everything IN A SET

ALL-INCLUSIVE SETS FOR YOUR PULL-OUT UNIT ...

You like it simple and uncomplicated? If you do, then the all-inclusive sets for pull-out units are the right choice for you. This will give you a good basis to which you can add in any way you choose.





Our drawer and pull-out sets give you a selection of the most practical and popular organisers in all materials.

Our drawer and pull-out sets give you a selection of the most practical and popular organisers in all materials.

Interior organisers all-inclusive set solid ash wood, black for your base unit with pull-outs, consisting of:

- Examples of individual sets (top / right):**

- 

13





Everything **TAILORED**

AND PUT TOGETHER TO SUIT YOUR NEEDS.

Find everything you need: you can choose from a wide range of individual interior organisation elements to configure your drawers and pull-outs in any way you wish. Put together your interior organisation yourself.

Examples of interior organisers put together to suit individual needs:



1 Anti-slip mat | Sliding insert for small items |
Spice insert | Segment cutlery insert

2 Anti-slip mat | All-purpose tray 1 | 3 x box 1 | Box 2

3 Anti-slip mat | Foil unwinder | Spice insert set | Spice insert |
Segment cutlery insert

4 Anti-slip mat | Depth partition | Box 3

You will find a complete product overview from page 17 onward.



Basic equipment

QUARTZ GREY PLASTIC

FOR THE COMPLETE UNIT:

All-inclusive set interior organiser – for base units with 1 drawer and 2 pull-outs

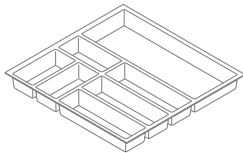


BEI-SET ...
↔ 60/80/**90**/100/120
↘ 60

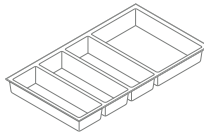
FOR DRAWERS AND INTERIOR DRAWERS:



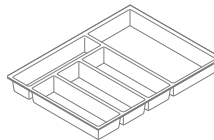
Cutlery insert
BEI ...
↔ 30/40/45/50/**60**/80/90/100/120
↘ 60



behind a side-hung door
BEI ...-DR
↔ 40/45/50/**60**
↘ 60



for carcass depth 39 cm
BEI ...-39
↔ **60**/80/90/100/120
↘ 39



for carcass depth 50 cm
BEI ...-50
↔ 30/40/45/50/**60**/80/90/100/120
↘ 50



for carcass depth 75 cm
BEI ...-75
↔ **60**/80/90/100/120
↘ 75



Cutlery insert set
with spice insert
BEI ...-GEW
↔ **60**/80/90/100/120
↘ 60

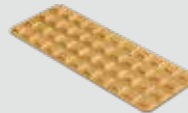


with knife block
BEI ...-MES
↔ **60**/80/90/100/120
↘ 60



with foil unwinder
BEI ...-FOL
↔ **60**/80/90/100/120
↘ 60

Individual elements – Inserts in solid oak wood



Spice insert
BEI-GEW



Knife block
BEI-MES



Foil unwinder
BEI-FOL

FOR PULL-OUTS AND INTERIOR PULL-OUTS:



Cross partition
AORP ...-T
↔ 30/40/45/50/**60**/80/90/100/120
↘ 39/50/60/75



Depth partition
AORP ...-T
↔ 30/40/45/50/**60**/80/90/100/120
↘ **60**/75

↔ Carcase width | ↘ Carcase depth
Bold = image shown



Upgrade

BLACK PLASTIC

FOR DRAWERS AND INTERIOR DRAWERS:



Cutlery insert

BE11K ...

↔ 30/40/45/50/60/80/90/100/120

↘ 60



for carcase depth 75 cm

BE11K ...-75

↔ **60**/80/90/100/120

↘ 75



Segment cutlery insert

BE11K-KT-50

↔ from carcase width 45 cm

↘ 50

FOR PULL-OUTS AND INTERIOR PULL-OUTS:



**Storage set with
partition elements**

AOR1K45-3T

↔ from carcase width 45 cm

↘ 60



**Storage set with
storage jars**

AOR1K45-3VG

↔ from carcase width 45 cm

↘ 60

Individual elements – Inserts in solid oak wood



Cutting board
BE11K-SB



Knife block
BE11K-MES



Foil unwinder
BE11K-FOL

↔ Carcase width | ↘ Carcase depth

Bold = image shown

Entry-level wood design

SOLID BEECH WOOD

FOR DRAWERS AND INTERIOR DRAWERS:



Cutlery insert

BE11H ...

↔ 30/40/45/50/60/80/90/100/120

↴ 60

Individual elements – Inserts in solid beech wood



Spice insert
BE11H-GEW



Knife block
BE11H-MES



Foil unwinder
BE11H-FOL



Natural

SOLID OAK WOOD

Full organisers

Everything at a glance: Check out our convenient overview to see which all-inclusive sets, sets for drawers and pull-outs and individual elements made of solid oak wood might fit in your kitchen. You've made your choice? Then simply place your order.



FOR THE COMPLETE UNIT:

All-inclusive set interior organiser – for base units with 1 drawer and 2 pull-outs

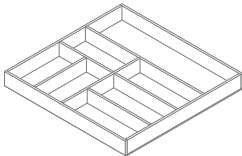


BEI2H-SET ...
↔ 60/80/**90**/100/120
↗ 60

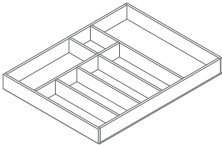
FOR DRAWERS AND INTERIOR DRAWERS:



Cutlery insert
BEI2H ...
↔ 30/40/45/50/**60**/80/90/100/120
↗ 60



behind a side-hung door
BEI2H ...-DR
↔ 40/45/50/**60**
↗ 60



for carcass depth 50 cm
BEI2H ...-50
↔ 30/40/45/50/**60**/80/90/100/120
↗ 50



for carcass depth 75 cm
BEI2H ...-75
↔ **60**/80/90/100/120
↗ 75



Cutlery insert set
with spice insert
BEI2H ...-GEW
↔ **60**/80/90/100/120
↗ 60




with knife block
BEI2H ...-MES
↔ **60**/80/90/100/120
↗ 60




with foil unwinder
BEI2H ...-FOL
↔ **60**/80/90/100/120
↗ 60


Individual elements – Inserts in solid oak wood



Spice insert
BEI2H-GEW



Knife block
BEI2H-MES



Foil unwinder
BEI2H-FOL

FOR PULL-OUTS AND INTERIOR PULL-OUTS:



Depth partition
AOR2H-LEI
↔ from carcass width 40 cm
↗ 60



Box 1
AOR2H-BOX 1
H x W x D = 150 x 236 x 236 mm
↗ 39/50/60/75



Cross-arrangement
AOR2H-KRZ
H x W x D = 110 x 221 x 221 mm
can be combined with BOX 1



Box 2
AOR2H-BOX 2
H x W x D = 150 x 236 x 472 mm
↗ 60/75



Box 3
AOR2H-BOX 3
H x W x D = 150 x 236 x 335 mm
↗ 50/60/75

Minimalist

SOLID OAK WOOD

Segmented organisers

SETS FOR DRAWERS AND INTERIOR DRAWERS:



Set 1

BEI2H ...-S

↔ 40/45/50/60/80/90/100/120*

↪ 60

Behind a side-hung door

BEI2H ...DR-S

↔ 45/50/60

↪ 60

*As of a carcass width of 80 cm, the set contains 2 cutlery inserts

SETS FOR PULL-OUTS AND INTERIOR PULL-OUTS:



Set 2

AOR2H ...-S

↔ 40/45/50/60/80/90/100/120*

↪ 60

*For carcass widths 45/50, the set contains 2x box 1



Set 3

AOR2H ...-S1

↔ 45/60/80/90/100/120*

↪ 60

*Depending on the carcass width, the set contains 1 to 3 boxes

SEGMENT INSERTS FOR DRAWERS AND INTERIOR DRAWERS:



Segment cutlery insert
BEI2H-KT 60-S
↔ from carcase width 40 cm
↗ 60



for carcase depth 50 cm
BEI2H-KT 50-S
↔ from carcase width 40 cm
↗ 50



for carcase depth 39 cm
BEI2H-KT 39-S
↔ from carcase width 40 cm
↗ 39



Extension element
for carcase depth 75 cm
BEI2H-...-TA
↔ **60/80/90/100/120**



Multi-functional insert
BEI2H-RAH-S
↗ 60



Sliding insert for small items
BEI2H-KLS-S
↗ 60



Knife block
BEI2H-MES-S
↗ 60



Foil unwinder
BEI2H-FOL-S
↗ 60



Spice insert
BEI2H-GEW-S
↗ 60



All-purpose tray 1
BEI2H-US 1
↗ 50/60/75



All-purpose tray 2
BEI2H-US 2
↗ 39/50/60/75

FOR PULL-OUTS AND INTERIOR PULL-OUTS:



Depth partition
AOR2H-LEI
↔ 40/45/50/60/80/90/100/120
↗ 60



Box 1
AOR2H-BOX 1
H x W x D = 150 x 236 x 236 mm
↗ 39/50/60/75



Cross-arrangement
AOR2H-KRZ
H x W x D = 110 x 221 x 221 mm
can be combined with BOX 1



Box 2
AOR2H-BOX 2
H x W x D = 150 x 236 x 472 mm
↗ 60/75



Box 3
AOR2H-BOX 3
H x W x D = 150 x 236 x 335 mm
↗ 50/60/75

↔ Carcase width | ↗ Carcase depth
Bold = image shown



First-class

SOLID ASH WOOD

Segment organisers

For sophisticated tastes: These all-inclusive sets, sets for drawers and pull-outs and individual elements are available in black ash wood.

FOR THE COMPLETE UNIT:

All-inclusive set interior organiser – for base units with 1 drawer and 2 pull-outs



BEI3H-SET ...
↔ 60/80/**90**/100/120
↗ 60

SETS FOR DRAWERS AND INTERIOR DRAWERS:



Set 1
BEI3H ...-S
↔ 40/45/50/60/80/**90**/100/120*
↗ 60
Behind a side-hung door:
BEI3H ...DR-S
↔ 45/50/60
↗ 60

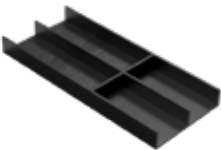
*As of a carcass width of 80 cm, the set contains 4 all-purpose trays



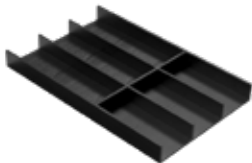
Set 2
BEI3H ...-S1
↔ 40/45/50/60/80/**90**/100/120*
↗ 60

*As of a carcass width of 80 cm, the set contains 2 multi-functional inserts

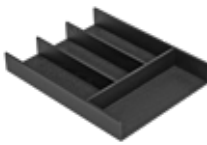
SEGMENT INSERTS FOR DRAWERS AND INTERIOR DRAWERS:



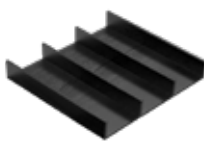
Segment cutlery insert
BEI3H 30
↔ from carcass width 30 cm
↗ 60



Segment cutlery insert
BEI3H 40
↔ from carcass width 40 cm
↗ 60



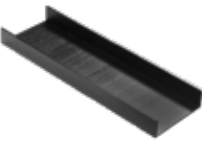
for carcass depth 50 cm
BEI3H 40-50
↔ from carcass width 40 cm
↗ 50



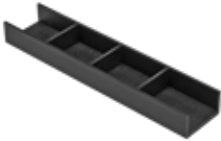
for carcass depth 39 cm
BEI3H 40-39
↔ from carcass width 40 cm
↗ 39



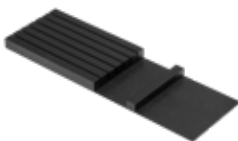
Extension element
for carcass depth 75 cm
BEI3H-60-120-TA
↔ **60/80/90/100/120**



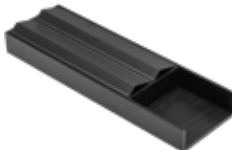
Multi-functional insert
BEI3H-MFE-S
↗ 60



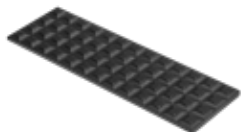
Multi-functional insert
BEI3H-10-MFE
↗ 60



Knife block
BEI3H-MES-1
↗ 60



Foil unwinder
BEI3H-FOL-1
↗ 60



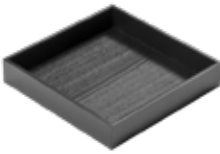
Spice insert
BEI3H-GEW-1
↗ 60



Spice insert set
BEI3H-4KD
↗ 60



All-purpose tray
BEI3H-US 1
↗ 50/60/75



All-purpose tray
BEI3H-US 2
↗ 39/50/60/75

↔ Carcase width | ↗ Carcase depth
Bold = image shown

SETS FOR PULL-OUTS AND INTERIOR PULL-OUTS:



Set 3
AOR3H ...-S
↔ 40/**45**/50/60/80/90/**100**/120*
↗ 60

*For carcase widths 45/50, the set contains 2x box 1



Set 4
AOR3H ...-S1
↔ **45**/60/80/90/**100**/120*
↗ 60

*Depending on the carcase width, the set contains 1 to 3 boxes

FOR PULL-OUTS AND INTERIOR PULL-OUTS:



Depth partition
AOR3H-LEI
↔ 40/45/50/60/80/90/100/120
↗ 60



Box 1
AOR3H-BOX 1
H x W x D = 110 x 236 x 236 mm
↗ 39/50/60/75



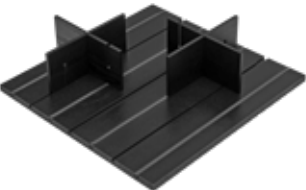
Cross-arrangement
AOR3H-KRZ
H x W x D = 75 x 220 x 220 mm
can be combined with BOX 1



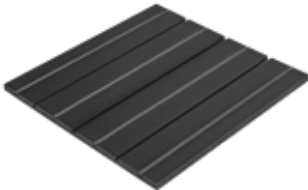
Box 2
AOR3H-BOX 2
H x W x D = 110 x 236 x 472 mm
↗ 60/75



Box 3
AOR3H-BOX 3
H x W x D = 110 x 236 x 335 mm
↗ 50/60/75



Function base with cross slots
and slot-in cross dividers
AOR3H ...-FB1
↔ **60**/80/90/100/120
↗ 60



Function base
with cross slots
AOR3H ...-FB
↔ **60**/80/90/100/120
↗ 60



SET - 2 slot-in cross dividers
suitable for the function base
AOR3H-2KREUZ



KEEP THINGS TOGETHER THAT BELONG TOGETHER

For instance, keep baking utensils together in one box. Or put breakfast items together. This way, everything is quickly put on the table and cleared away again.





nolte**neo.**

INTERIOR ORGANISERS
for your
nolteneo** KITCHEN**



natierneo.

neo basic

PLASTIC *black*



nolte**neo.**



FOR DRAWERS AND INTERIOR DRAWERS:



Cutlery insert

BE11K ...-N

↔ 30/40/45/50/60/80/90/100/120

↪ 60

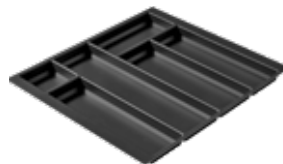


for carcass depth 75 cm

BE11K ...-N-75

↔ 60/80/90/100/120

↪ 75



for hob base units:

BE11K ...-NH2

↔ 60/80/90/100/120

↪ 60



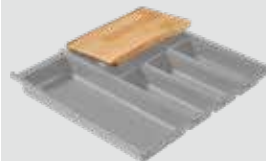
Segment cutlery insert:

BE11K-KT-50

↔ from carcass width 45 cm

↪ 50

Individual elements – Inserts in solid oak wood



Cutting board

BE11K-SB



Knife block

BE11K-MES



Foil unwinder

BE11K-FOL

FOR PULL-OUTS AND INTERIOR PULL-OUTS:



Storage set with partition elements

AOR1K45-3T

↔ from carcass width 45 cm

↪ 60



Storage set with storage jars

AOR1K45-3VG

↔ from carcass width 45 cm

↪ 60

↔ Carcass width | ↪ Carcass depth

Bold = image shown

neo first-class

SOLID ASH WOOD *Segment organisers*



notte **neo.**

SETS FOR DRAWERS AND INTERIOR DRAWERS:



Set 1

BEI3H ...-NS

↔ 45/50/**60**/80/90/100/120*

↗ 60



Set 2

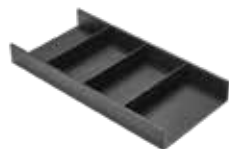
BEI3H ...-NS1

↔ 45/50/**60**/80/90/100/120*

↗ 60

*As of a carcase width of 80 cm, the set contains additional items

SEGMENT INSERTS FOR DRAWERS AND INTERIOR DRAWERS:



Segment cutlery insert

BEI3HN 30

↔ from carcase width 30 cm

↗ 60



Segment cutlery insert

BEI3HN 40

↔ from carcase width 40 cm

↗ 60



for carcase depth 50 cm

BEI3HN 40-50

↔ from carcase width 40 cm

↗ 50

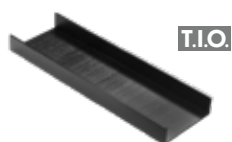


for carcase depth 39 cm

BEI3HN 40-39

↔ from carcase width 40 cm

↗ 39

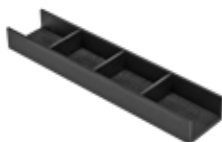


T.I.O.

Multi-functional insert

BEI3H-MFE-S

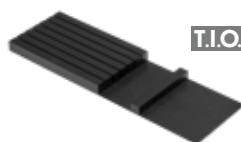
↗ 60



Multi-functional insert

BEI3H-10-MFE

↗ 60



T.I.O.

Knife block

BEI3H-MES-1

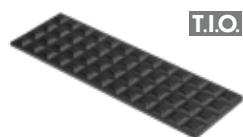
↗ 60



Foil unwinder

BEI3H-FOL-1

↗ 60



T.I.O.

Spice insert

BEI3H-GEW-1

↗ 60



T.I.O.

Spice insert set

BEI3H-4KD

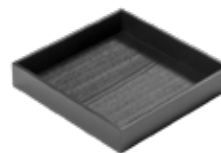
↗ 60



All-purpose tray

BEI3H-US 1

↗ 60



All-purpose tray

BEI3H-US 2

↗ 39/50/60/75

↔ Carcase width | ↗ Carcase depth

Bold = image shown



SETS FOR PULL-OUTS AND INTERIOR PULL-OUTS:



**At a carcase width of 120 cm,
the set contains 2x multi-functional
inserts*

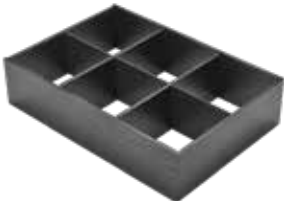
Set 3
AOR3H ...-NS
↔ 40/45/50/60/80/90/100/120*
↪ 60



**Depending on the carcase width,
the set contains different items*

Set 4
AOR3H ...-NS1
↔ 45/60/80/90/100/120*
↪ 60

FOR PULL-OUTS AND INTERIOR PULL-OUTS:



Multi-functional insert
AOR3HN40-MFE
↔ 40/45/50/60/80/90/100/120
↪ 60



Storage container set
AOR3H-3KD
↔ 40/45/50/60/80/90/100/120
↪ 60



T.I.O.

Box 1
AOR3H-BOX 1
H x W x D = 110 x 236 x 236 mm
↪ 39/50/60/75



Cross-arrangement
AOR3H-KRZ
H x W x D = 75 x 220 x 220 mm
can be combined with BOX 1



T.I.O.

Box 2
AOR3H-BOX 2
H x W x D = 110 x 236 x 472 mm
↪ 60/75



T.I.O.

Box 3
AOR3H-BOX 3
H x W x D = 110 x 236 x 335 mm
↪ 50/60/75



T.I.O.

Box 4
AOR3HN-BOX 4
H x W x D = 110 x 327 x 157 mm
↪ 39/50/60/75



Lid for box 1 / 2
AOR3HN-DB1 / -DB2
matches box 1 or box 2

↔ Carcase width | ↪ Carcase depth

Bold = image shown



neo design lovers

T.I.O. (Take It Out) *Full organisers*



noite neo.

FOR DRAWERS AND INTERIOR DRAWERS:

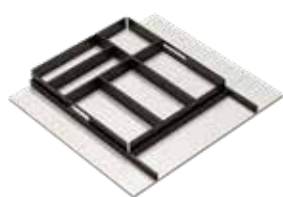


T.I.O. cutlery insert

BEI3HT ...

↔ 30/40/45/50/60/80/90/100/120*

↪ 60



behind a side-hung door

BEI3HT 60-DR

↔ 60*

↪ 60



for carcass depth 50 cm

BEI3HT 60-50

↔ 60*

↪ 50

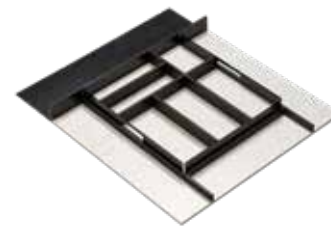


for carcass depth 39 cm

BEI3HT 60-39

↔ 60

↪ 39



for carcass depth 75 cm

BEI3HT ...-75

↔ 60/80/90/100/120*

↪ 75

*With a removable tray element as of a carcass width of 60 cm



for hob base units

BEI3HT ...-H2

↔ 60/80/90/100/120

↪ 60



Segment cutlery insert

BEI3HT 40-50-S

↔ from carcass width 40 cm

↪ 50



for carcass depth 39 cm

BEI3HT 40-39-S

↔ from carcass width 40 cm

↪ 39



Extension element

for carcass depth 75 cm

BEI3H-60-120-TA

↔ from carcass width 30 cm

SEGMENT INSERTS FOR DRAWERS AND INTERIOR DRAWERS:



Multi-functional insert

BEI3HT-MFE

↪ 60



Multi-functional insert

BEI3HT-10-MFE

↪ 60



Knife block

BEI3HT-10-MES

↪ 60



Foil unwinder

BEI3HT-FOL

↪ 60



Spice insert set

BEI3HT-10-4KD

↪ 60

FOR PULL-OUTS AND INTERIOR PULL-OUTS:



T.I.O. SET function base with cross slots and 2 slot-in cross dividers

AOR3HT ...-FB1

↔ 60/80/90/100/120

↪ 60



T.I.O. function base with cross slots

AOR3HT ...-FB

↔ 60/80/90/100/120

↪ 60



SET - 2 slot-in cross dividers

suitable for the function base

AOR3H-2KREUZ



The individual elements in black ash wood marked with **T.I.O.** can optionally be used in the T.I.O. system.

↔ Carcase width | ↪ Carcase depth

Bold = image shown



For more information about
kitchens, utility rooms or living
room furniture, check out our
brochures in the
DOWNLOAD AREA

**CLICK
HERE**



Sustainability as a guiding principle defines our entire company and its value chain and is reflected in our daily actions and mindset. It is firmly embedded in our comprehensive company strategy, with which we aim to achieve lasting improvements for people and the environment.

OUR COMMITMENT TO ...



OUR COMPANY

With the aim of good corporate governance and to uphold the values associated with this, we have established resilient structures, processes and partnerships throughout the years. High quality, modern aesthetics, sustainability and appealing value for money are factors that we always account for in our product range. For instance, over 99 % of the wood we use was grown in accordance with the principles of sustainable forestry.



PEOPLE

Our employees are one of our top priorities. Their commitment, knowledge, experience and curiosity are what makes Nolte Küchen what it is today. That is why we support our employees in their personal development, both professionally by offering initial and continued training opportunities, and in the private sphere by respecting and promoting a healthy work-life balance.



THE ENVIRONMENT

As a company we have made it our goal to use natural resources responsibly and sustainably. Thanks to our effective climate and environmental management, we have already achieved climate-neutral production at our locations in Löhne and Melle. The main energy sources used by Nolte Küchen are certified green power and our boilers that use wood waste from our own production.



SOCIETY

Since its early days, Nolte Küchen has had a close relationship with its home region and we actively promote its health and growth. Social commitment is a tradition at our company and has been a core value since our beginnings. We help people and regions in crisis situations, for instance education institutes, associations and foundations for child welfare. Our motto is: We give support where support is needed!

”

The way we
act today shapes
the world
we leave future
generations.
Sustainability is our
commitment to a
better future.

“

Since the summer of 2023, the Nolte Küchen site is home to native bees, which have already produced their first honey yields in their hives. But these bees don't just give us delicious honey, they are also essential pollinators that contribute significantly to maintaining the diversity of plant life.

Discover the
**NOLTE SUSTAINABILITY
REPORT**



CLICK
HERE



The kitchen is the room of rooms.
We probably *live* more,
and more *intensively*,
here than anywhere else in the home.
It is the place where
we meet, where we encounter others.
As family or friends.
As a couple.
We *cook*, *eat* and *enjoy* ourselves
in the kitchen. And sometimes we have
all the time in the world as we do so.
We argue. And *make up again*.
We read, write, send emails, post messages.
And maybe philosophise a little.
And – quite secretly – the kitchen sets
the rhythm of our day.
Good morning. Then midday. Then evening.
And sometimes night ...
Which is *why we love* the kitchen.

Living in the kitchen. nolte